

CHG-MERIDIAN SUPPORTING THE EDUCATION SECTOR FOR OVER 40 YEARS

CERTAINTY WITH CHG-MERIDIAN: SCHOOL & ACADEMIES SPECIALISTS



For over 40 years, CHG-MERIDIAN has been helping a wide range of schools and academies save both time and money, by providing them with customised leasing concepts. How is this possible exactly?

By enabling our customers to move to an ‘as a service’ model we can cover every aspect of the assets lifecycle, meaning all you have to do is simply decide on the IT equipment you wish to rollout.



+1,000

UK Schools

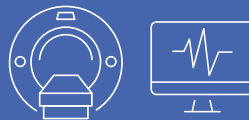
Have current lease agreements with CHG



+500,000

Students

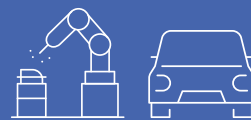
Learning on, or have access to CHG leased equipment



+50 %

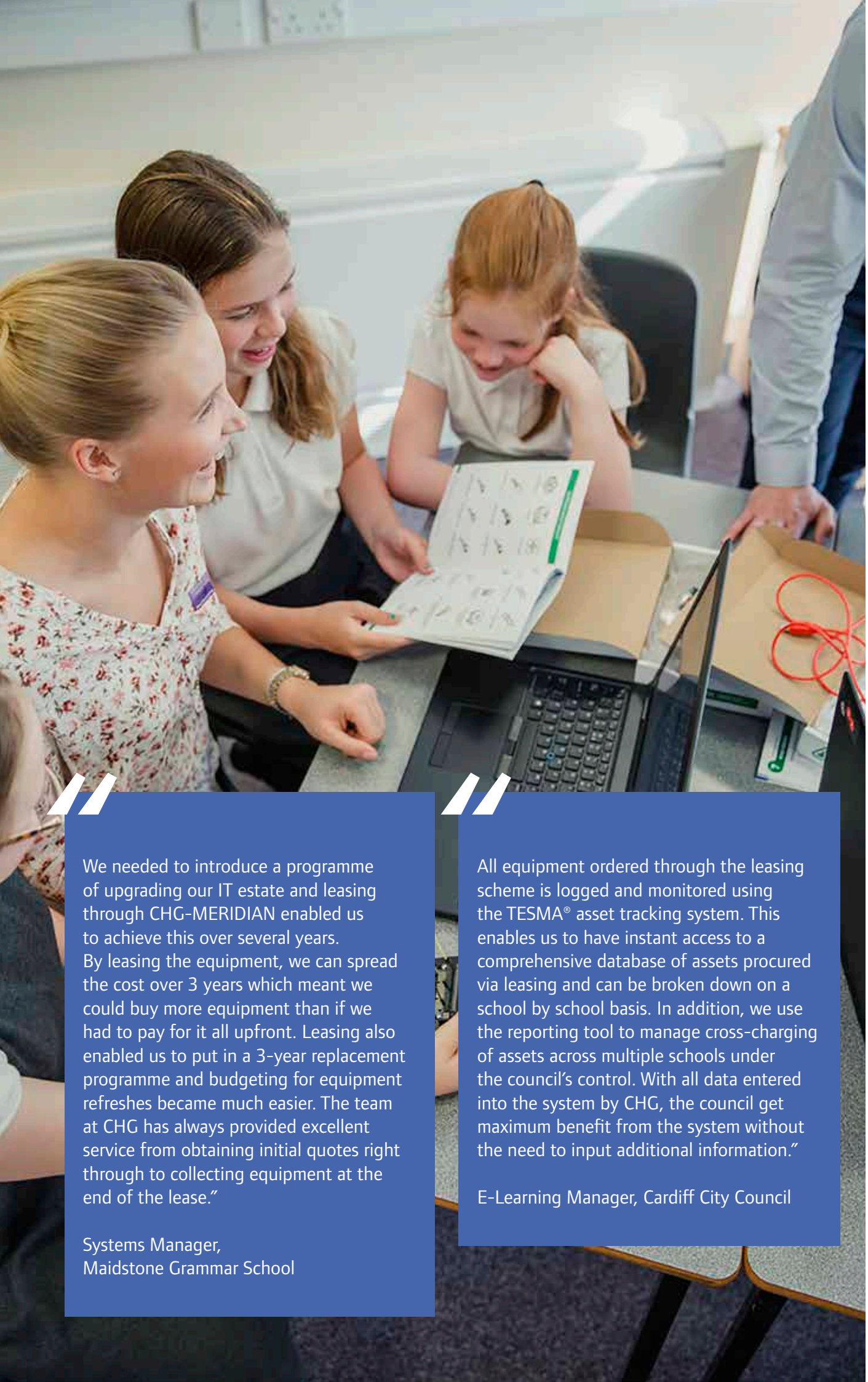
Training future scientists

Over 50 % of UK hospitals treat patients using CHG leased equipment



Teaching Design

Drive a German car?
It's probably been manufactured or designed on CHG leased equipment



“We needed to introduce a programme of upgrading our IT estate and leasing through CHG-MERIDIAN enabled us to achieve this over several years. By leasing the equipment, we can spread the cost over 3 years which meant we could buy more equipment than if we had to pay for it all upfront. Leasing also enabled us to put in a 3-year replacement programme and budgeting for equipment refreshes became much easier. The team at CHG has always provided excellent service from obtaining initial quotes right through to collecting equipment at the end of the lease.”

Systems Manager,
Maidstone Grammar School

“All equipment ordered through the leasing scheme is logged and monitored using the TESMA® asset tracking system. This enables us to have instant access to a comprehensive database of assets procured via leasing and can be broken down on a school by school basis. In addition, we use the reporting tool to manage cross-charging of assets across multiple schools under the council's control. With all data entered into the system by CHG, the council get maximum benefit from the system without the need to input additional information.”

E-Learning Manager, Cardiff City Council

CONFIDENCE WITH CHG-MERIDIAN

We consider the education sector as a key market and have built up a considerable portfolio of ICT leased equipment in the UK and across Europe. By working with us, you can have the utmost confidence that you are doing so with someone who understands your pain and knows what they are doing.



Focusing on IT technology in the UK alone, we lease equipment to more than 800 local authorities, schools, academies, HE/FE institutions, universities and other public sector entities. Furthermore, we are ISO-certified to ISO 27001 and ISO 9001 and are a member of the Finance & Leasing Association as well as a recognised lessor on several leasing frameworks.

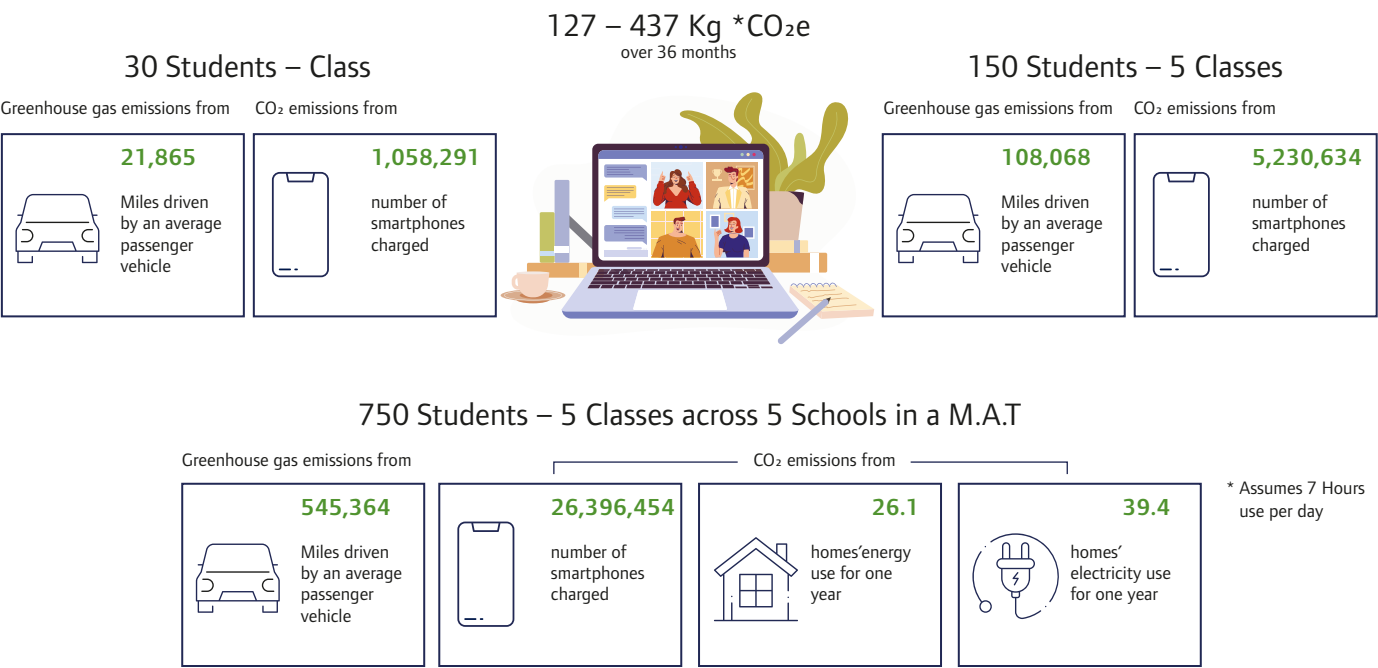
PUBLIC SECTOR LEASING FRAMEWORKS WE CURRENTLY SIT ON:

- Crescent Purchasing Consortium (CPC) – Leasing services framework
- Durham County Council – Framework for the provision of leasing facilities
- Crown Commercial Services – DPS Lease & Loan framework
- NHS Supply Chain – Framework agreement for the supply of leasing solutions
- Cambridge University Hospital NHS Trust – Financial leasing services framework
- Southampton NHS Foundation Trust – Financial leasing framework
- Glasgow Leisure Trust – Procurement of operating lease and finance lease facilities

WHAT IS carbonZERO?

Environmental impact has become a focal message for the education sector.

With carbonZERO, CHG’s carbon-neutral leasing option, the production, transportation, use phase and end-of-lease phase of your financial IT assets can now be certified carbon-neutral, ensuring sustainable IT procurement.



CIRCULAR ECONOMY – RETHINKING LIFECYCLE MANAGEMENT

We help schools to support a **Circular Economy** whereby resources are kept in use through recycling and reuse. This is key to reducing the negative impacts of extracting raw materials.

Being environmentally friendly is core to our ethos:

- We have zero landfill rate
- We have a route to remarket for 95% of returned kit
- We strive to recycle obsolete parts according to WEEE regulations
- Our customers can offset the CO₂ generated in the production, transportation, usage and end-of-life of their leased IT assets.



ADDITIONAL BENEFITS TO A CIRCULAR ECONOMY



Sustainability

An end-to-end approach to lifecycles makes it possible to rethink traditional business models and procurement processes.

Our extensive remarketing experience enables us to increase the life of technology equipment and ensure its sustainable reuse.

Student & Staff Wellbeing

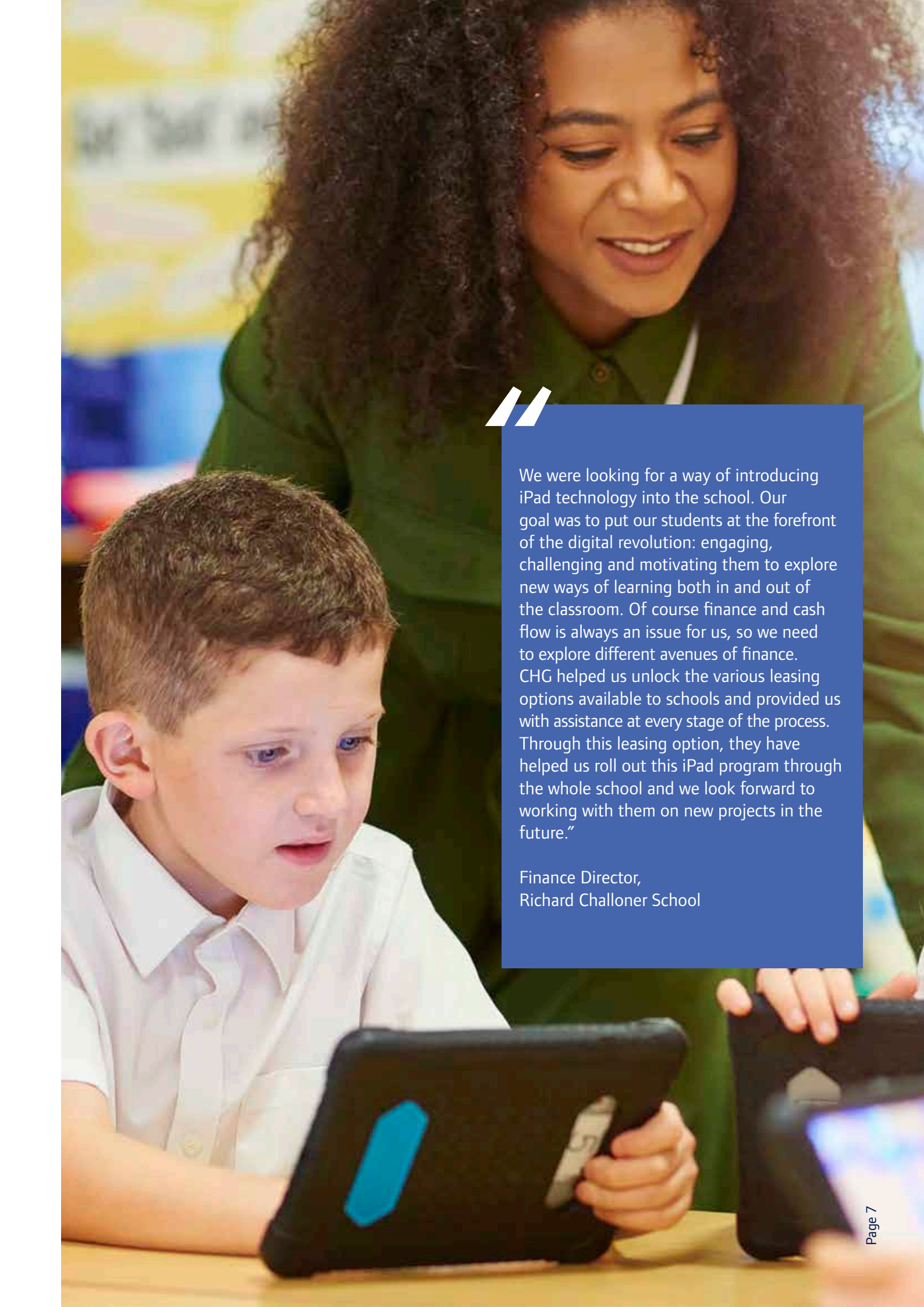
The digital workplace and remote learning is not a vision of the future, it's now a reality.

We provide schemes for students and staff that create a flexible and state-of-the-art learning environment that nurtures creativity and encourages collaboration; ensuring that you contribute to have a highly skilled workforce supporting motivated students.

Robust Planning

Access to mobile devices enhances the combination of school learning with work undertaken at home.

Providing staff with access to up-to-date technology and bridging the digital divide for students are both essential to ensuring that everyone shares the same opportunity to achieving their full potential.



“We were looking for a way of introducing iPad technology into the school. Our goal was to put our students at the forefront of the digital revolution: engaging, challenging and motivating them to explore new ways of learning both in and out of the classroom. Of course finance and cash flow is always an issue for us, so we need to explore different avenues of finance. CHG helped us unlock the various leasing options available to schools and provided us with assistance at every stage of the process. Through this leasing option, they have helped us roll out this iPad program through the whole school and we look forward to working with them on new projects in the future.”

Finance Director,
Richard Challoner School

MEET THE EDUCATION TEAM



Hannah

Kim

Martyn

GET IN TOUCH:

Email: education@chg-meridian.com

Twitter: [@CHGEducation](https://twitter.com/CHGEducation)

CHG-MERIDIAN UK Limited
65 High Street, Egham, Surrey TW20 9EY